

### PARTS LIST

#### ORDERING INFORMATION

##### How To Order Parts

1. Identify the parts required by referring to the following pages for part numbers and part descriptions.
2. To place an order, contact your local Rytec representative or the Rytec Customer Support Department at 800-628-1909 or 262-677-2058 (fax).
3. To ensure the correct parts are shipped, please include the serial number of your door with the order. The serial number can be found on the serial number plate located inside the left side column, at approximately eye level.

##### Substitute Parts

Due to special engineering and product enhancement, the actual parts used on your door may be different from those shown in this manual.

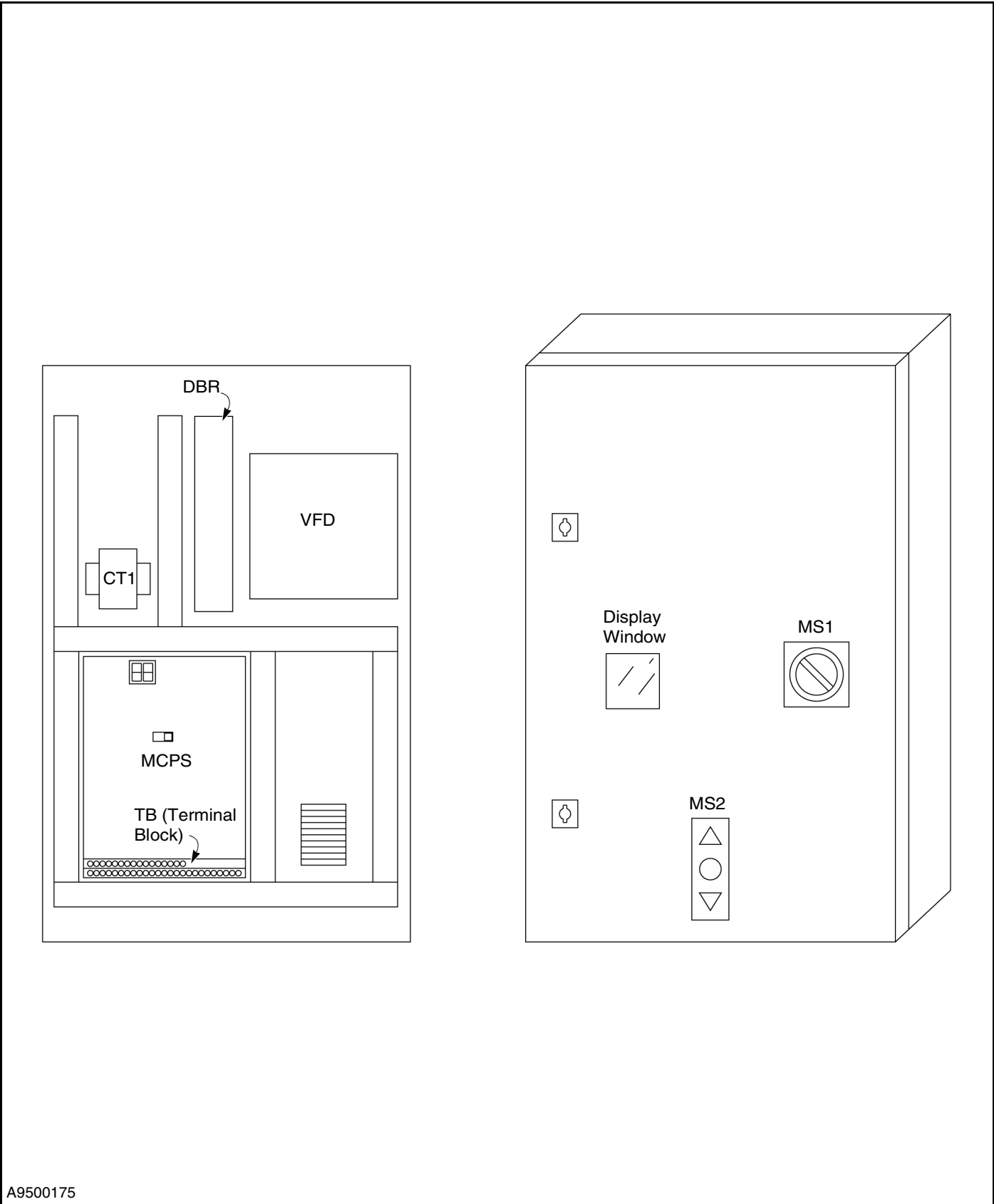
Also, if a part has been improved in design and bears a revised part number, the improved part will be substituted for the part ordered.

##### Return of Parts

Rytec will not accept the return of any parts unless they are accompanied by a Return Merchandise Authorization (RMA) form.

Before returning any parts, you must first contact the Rytec Customer Support Department to obtain authorization and an RMA form.

CONTROL PANEL



A9500175

Figure 75

ITEM	QTY.	PART	DESCRIPTION
-	1	87730 SST-S 460	Control Panel 460V 2.2 kw
CT1	1	Consult Factory	Transformer, 100VA, 200-300 Volts
DBR	1	Consult Factory	Braking Resistor
MCSP	1	02405001-02	MCPS Controller and EPROM
MS1	1	02380183	Main Disconnect Switch, 20 Amp
MS2	1	02421101	Keypad, Up/Down/Stop Membrane Style
TB	10	02204860	Terminal Block, 600V, 10-20 AWG
VFD	1	021069127	Vacuum Fluorescent Display, 1.5kw, 230 Volts AC, w/DB Resistor
Decal	1	0914004	Decal Overlay, Ryttec SST-RS/US (not shown)

*A/R = as required*

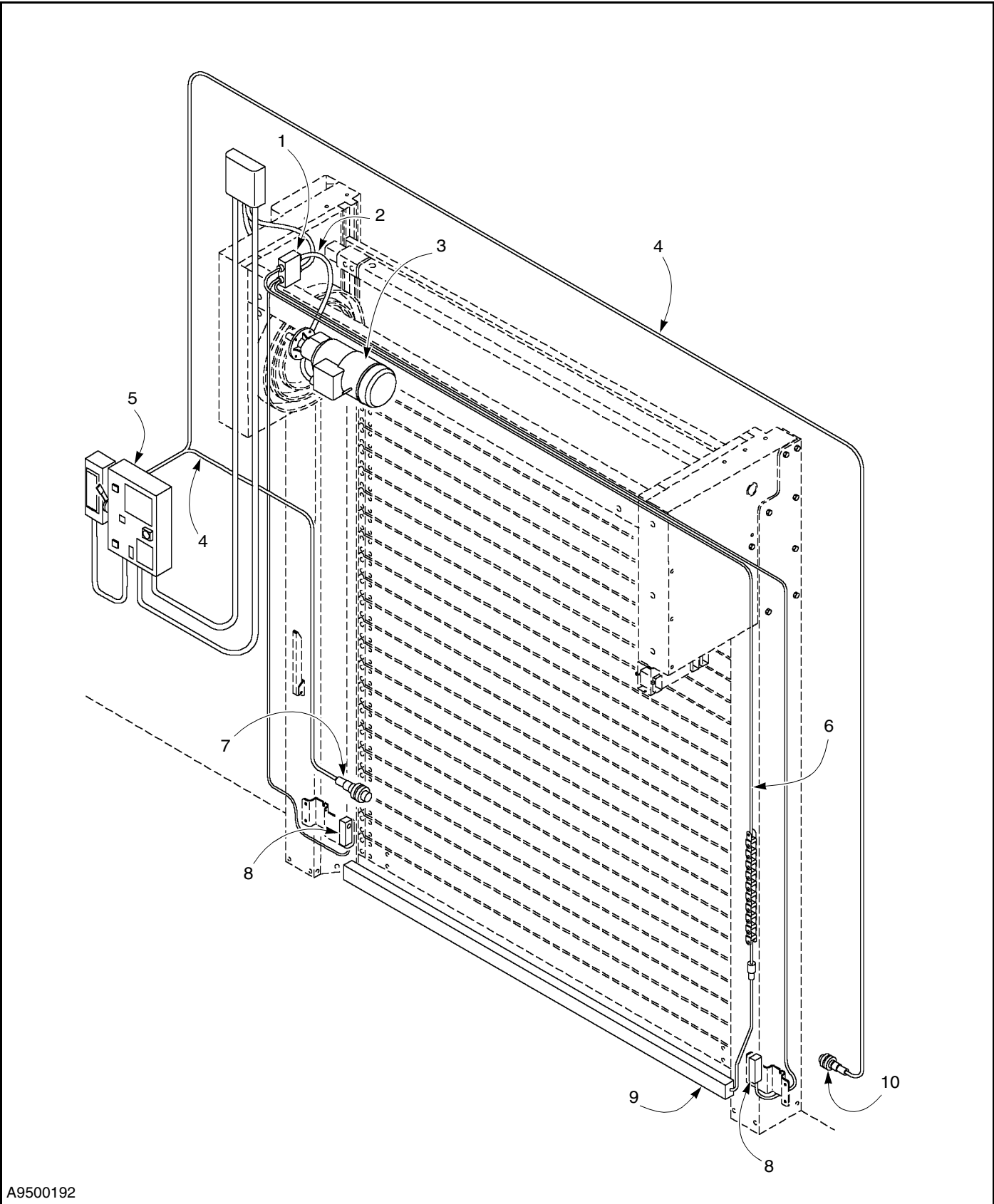
*\* Items are produced based on manufactured height and width of door.*

*\*\* Items only used on doors 16 feet and taller.*

**ALWAYS INCLUDE SERIAL NUMBER OF DOOR WHEN PLACING ORDER**

To ensure you receive the correct parts when placing an order, always include the serial number of your door. Also, due to product enhancement, the actual parts on your door may be different from those shown in this manual.

WIRING AND ELECTRICAL



A9500192

Figure 76

ITEM	QTY.	PART #	DESCRIPTION
1	1	WN760/cc	Junction Box
2	1	02222625	Cable, Electric Brake
3	1	02241744	Motor Gearbox Assembly
4	2	0-012-053	Cable, Telco Photo Eye
5	1	87730rytec sst-s-460	Control Panel (See Page 42)
6	1	WN817/bs	Connecting Cable, Energy Chain (See Page 58)
7	1	0-014-016	Photo Eye Emitter, Telco (Field-Installed Photo Eye)
8	1	02223208	Photo Eyes, Receiver and Emitter, (Factory-Installed Photo Eyes, One Set, Cables Included, See page 56)
9	1	E238601	Reversing Edge Assembly
10	1	0-014-015	Photo Eye Receiver, Telco (Field-Installed Photo Eye)

*A/R = as required*

*\* Items are produced based on manufactured height and width of door.*

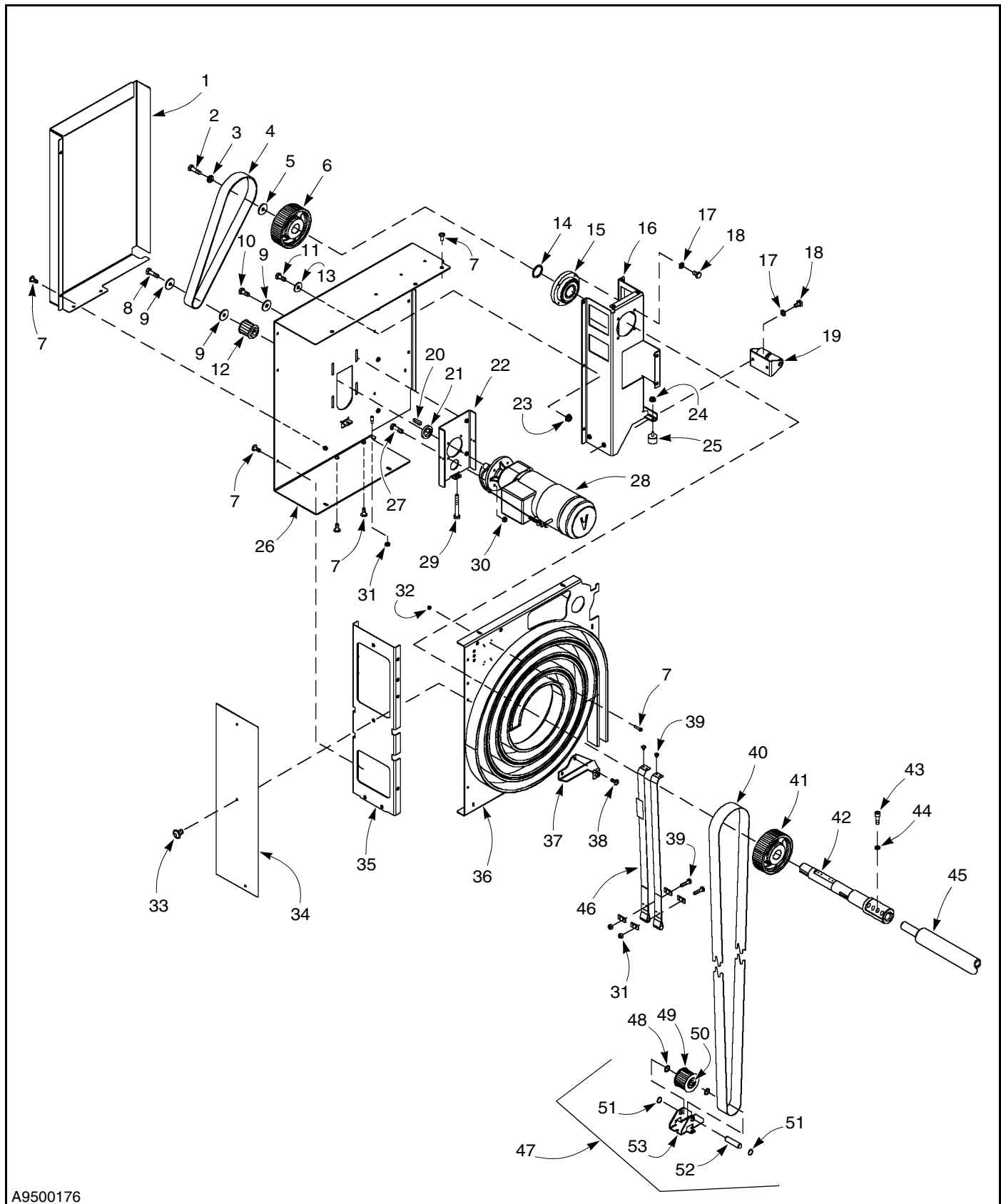
*\*\* Items only used on doors 16 feet and taller.*

## ALWAYS INCLUDE SERIAL NUMBER OF DOOR WHEN PLACING ORDER

To ensure you receive the correct parts when placing an order, always include the serial number of your door. Also, due to product enhancement, the actual parts on your door may be different from those shown in this manual.

## PARTS LIST—LEFT DRIVE ASSEMBLY

### LEFT DRIVE ASSEMBLY



A9500176

Figure 77

## PARTS LIST—LEFT DRIVE ASSEMBLY

ITEM	QTY.	PART #	DESCRIPTION	ITEM	QTY.	PART #	DESCRIPTION
1	1	238353D	Belt Guard, 5000<H<=6000	29	1	01260365	Screw, DIN 933-8.8 M10x75 Hex Head
2	1	01260272	Screw, DIN 933-8.8 M8x16 Hex Head	30	4	01335008	Nut, Lock, DIN 985-8 M8 Nylon Insert Hex
3	1	01080030	Lock Washer, DIN 127 A8	31	2	01270040	Nut, DIN 934-8 M6 Hex
4	1	083104317	Drive Belt (HTD 1440-8M- 50)	32	2	01335004	Nut, Lock, DIN 985-8 M4 Nylon Insert
5	1	WN018_C	Flat Washer, D60x9x5 Thick	33	3	01900820	Screw, M8x20 T40 Torx Drive Dome Washer Head
6	1	206514	Drive Pulley	34	1	238354D	End Cap Plate, 5000<H<=6000
7	28	01900820	Screw, M8x20 T40 Torx Drive Dome Washer Head	35	1	238913D	Brace, Front Console
8	1	01250595	Screw, DIN 931-8.8 M10x50 Hex Head	36	1	238903_1D-0	Console Inside w/spiral Links, Lh, 4000<H<=5000
9	1	WN018_A	Washer, D30/7x5	37	1	238864/1	Cover Bracket Assembly, Left
10	6	01260320	Screw, DIN 933 8.8 M10x25, Hex Head	38	2	01900812	Screw, M8x12 T30 Torx Drive Dome Washer Head
11	3	01260310	Screw, DIN 933-8.8 M10x20 Hex Head	39	8	01900708	Screw, M6x8 T30 Torx Drive Dome Washer Head
12	1	206515	Motor Pulley	40	1	08310435*	Tooth Belt Htd 1360-8M-50
13	3	01060043	Washer, Flat, DIN 125 A10.5	41	1	206513	Tension Pulley
14	1	01340230	Spacer, Tension Pulley	42	1	238503_1	Drive Shaft, Drive Side
15	1	238856	Bearing Assembly	43	16	01180525	Screw, DIN 912-12.9 M8x25 Hex Socket
16	1	238906_1D	Support Housing	44	16	01690080	Lock Washer, DIN 7980 M8
17	6	01080040	Lock Washer, DIN 127 A10	45	1	218704*	Line Shaft Weldment
18	6	01260300	Screw, DIN 933-8.8 M10x16 Hex Head	46	A/R	217872*	Spring Belt Assembly, 40mm
19	1	238863	Guide Pulley Assembly	47	2	238803	Bottom Pulley Assembly (Consists of items 48 thru 53)
20	1	01531420	Key, DIN 6885 14x9x56	48	2	01340120	Washer, Flat, DIN 388 SS 20x28x2
21	1	WN250_C	Collar	49	1	206516	Pulley, Bottom
22	1	237865	Motor Bracket Assembly	50	2	05020080	Bearing, Bottom Pulley
23	3	01901510	Nut, M10 Flange Hex	51	2	01130020	Retaining Ring, External, 20mm
24	1	01901508	Nut, M8 Flange Hex	52	1	238505-01	Pin, Bottom Pulley
25	1	04100145	Bumper, Upper Travel	53	1	238317	Clevis, Bottom Pulley
26	1	238902_1D	Sub Assy., Console Outside Metal. Lh Drive, 5000<H<=6000				
27	4	01260280	Screw, DIN 933-8.8 M8x25 Hex Head				
28	1	02241744	Motor/Gearbox Assembly				

*A/R = as required*

*\* Items are produced based on manufactured height and  
width of door.*

*\*\* Items only used on doors 16 feet and taller.*

### ALWAYS INCLUDE SERIAL NUMBER OF DOOR WHEN PLACING ORDER

To ensure you receive the correct parts when placing an order, always include the serial number of your door. Also, due to product enhancement, the actual parts on your door may be different from those shown in this manual.

## PARTS LIST—BRAKE RELEASE ASSEMBLY

### BRAKE RELEASE ASSEMBLY

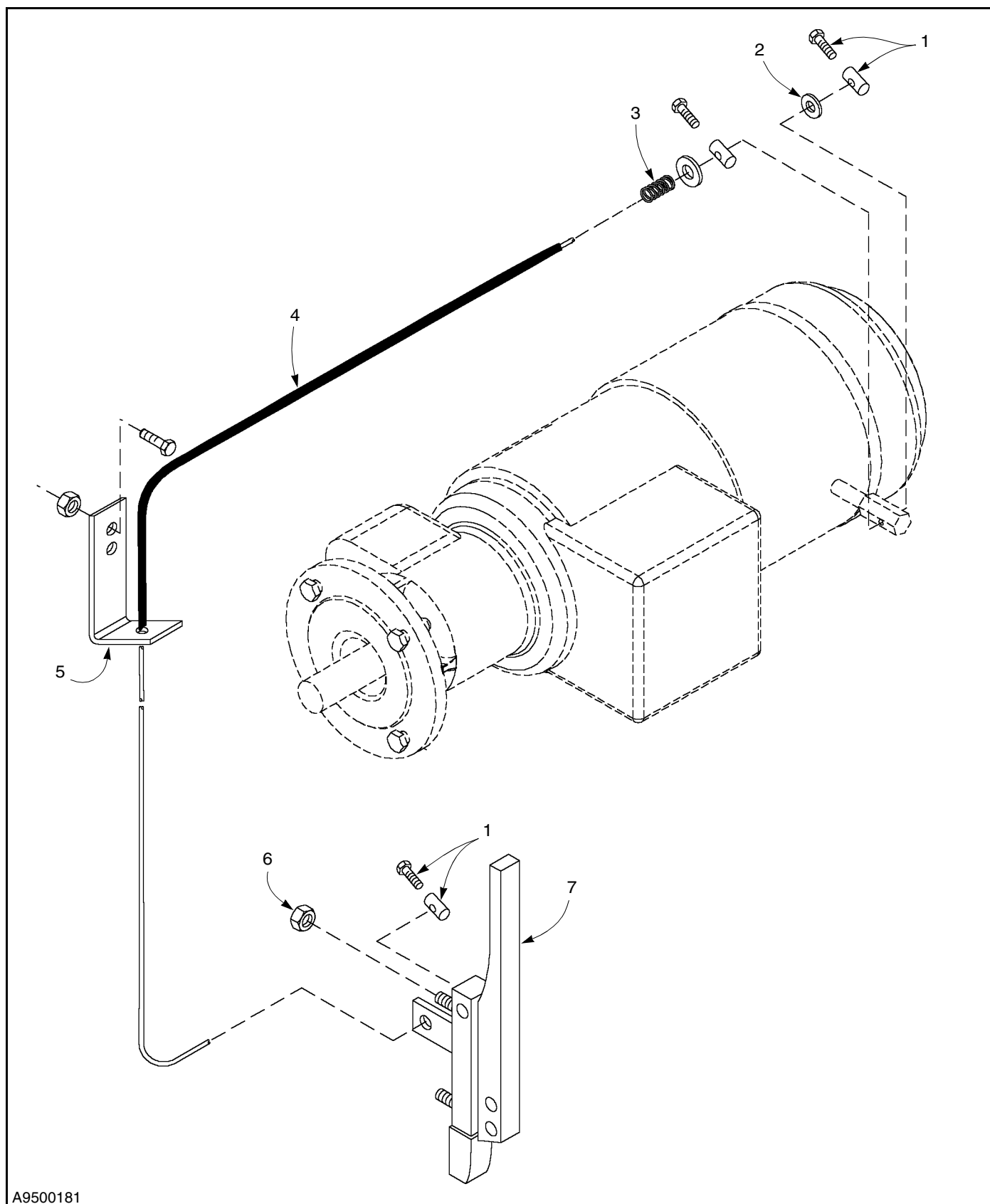


Figure 78

## PARTS LIST—BRAKE RELEASE ASSEMBLY

ITEM	QTY.	PART #	DESCRIPTION
1	2	08151080	Clamp, Cable Stop
2	2	01900050	Washer, Flat, H1231 6.4x25x1.25 Thick
3	1	080701071	Spring
4	1	08210610	2mm Steel Cable 6x7
5	1	217361	Bracket, Motor Brake (w/ Mounting Hardware)
6	1	01335005	Nut, Lock, DIN 985-8 M5 Nylon Insert
7	1	0-904-011	Handle, Brake Release

*A/R = as required*

*\* Items are produced based on manufactured height and width of door.*

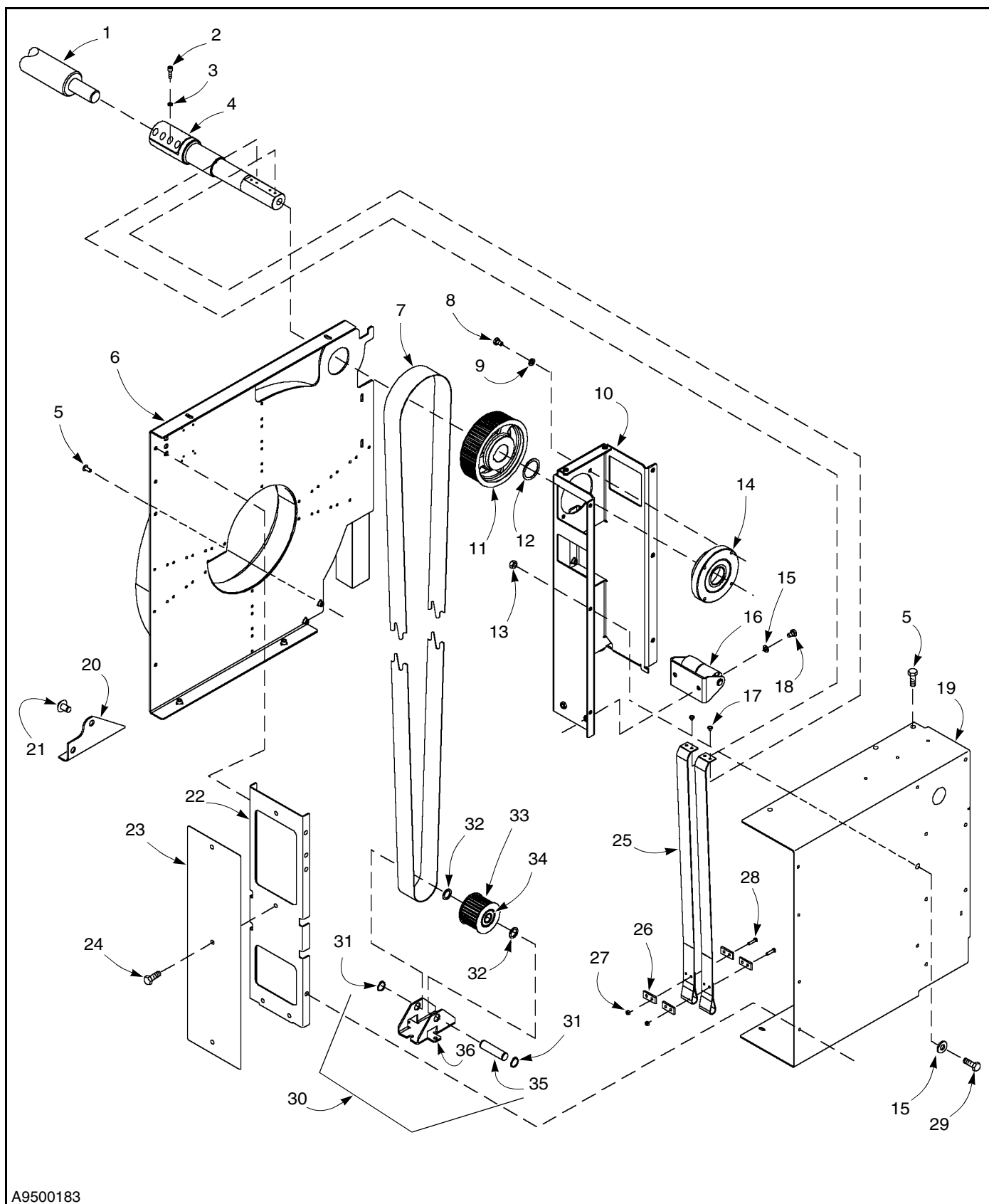
*\*\* Items only used on doors 16 feet and taller.*

### **ALWAYS INCLUDE SERIAL NUMBER OF DOOR WHEN PLACING ORDER**

To ensure you receive the correct parts when placing an order, always include the serial number of your door. Also, due to product enhancement, the actual parts on your door may be different from those shown in this manual.

## PARTS LIST—RIGHT DRIVE ASSEMBLY

### RIGHT DRIVE ASSEMBLY



A9500183

Figure 79

## PARTS LIST—RIGHT DRIVE ASSEMBLY

ITEM	QTY.	PART #	DESCRIPTION	ITEM	QTY.	PART #	DESCRIPTION
1	1	218704*	Line Shaft Weldment	20	1	238864_2	Assembly, Cover Bracket, Right
2	16	01180525	Screw, DIN 912-12.9 M8x25 Hex Socket Head	21	2	01900812	Screw, M8x12 T30 Torx Drive Dome Washer Head
3	16	01690080	Lock Washer, Din 7980 M8	22	1	238913D	Brace, Front Console
4	1	238503_2	Drive Shaft, Non-Drive Side	23	1	238354D	End Cap Plate, 5000<H<=6000
5	18	01900820	Screw, M8x20 T40 Torx Drive Dome Washer Head	24	3	01900820	Screw, M8x20 T40 Torx Drive Dome Washer Head
6	1	238903_2D-01	Console Inside w/Spiral Links, Rh 5000<H<=6000	25	2	217872*	40mm Spring Belt Assembly
7	1	08310435*	Tooth Belt Htd 1360-8M-50	26	4	205082	Clamp Plate
8	6	01260300	Screw, DIN 933-8.8 M10x16 Hex Head	27	4	01270040	Nut, DIN 934-8 M6 Hex
9	6	01080040	Lock Washer, DIN 127 A10	28	4	01260160	Screw, DIN 933-8.8 M6x25 Hex Head
10	1	238906_2D	Support Housing	29	3	01260310	Screw, DIN 933-8.8 M10x20 Hex Head
11	1	206513	Tension Pulley	30	1	238803	Bottom Pulley Assembly (Consists of items 31 thru 36)
12	1	01340230	Spacer, Tension Pulley	31	2	01130020	Retaining Ring, External, 20mm
13	3	01901510	Nut, M10 Flange Hex	32	2	01340120	Washer, Flat, DIN 388 SS 20x28x2
14	1	238856	Bearing Assembly	33	1	206516	Pulley, Bottom
15	2	01060043	Washer, Flat, DIN 125 A10.5	34	2	05020080	Bearing, Bottom Pulley
16	1	238863	Assembly, Guide Pulley	35	1	238505-01	Pin, Bottom Pulley
17	8	01900708	Screw, M6x8 T30 Torx Drive Dome Washer Head	36	1	238317	Clevis, Bottom Pulley
18	2	01260300	Screw, DIN 933-8.8 M10x16 Hex Head				
19	1	238902_2D	Console Outside Metal. Rh, Non-Drive Side				

*A/R = as required*

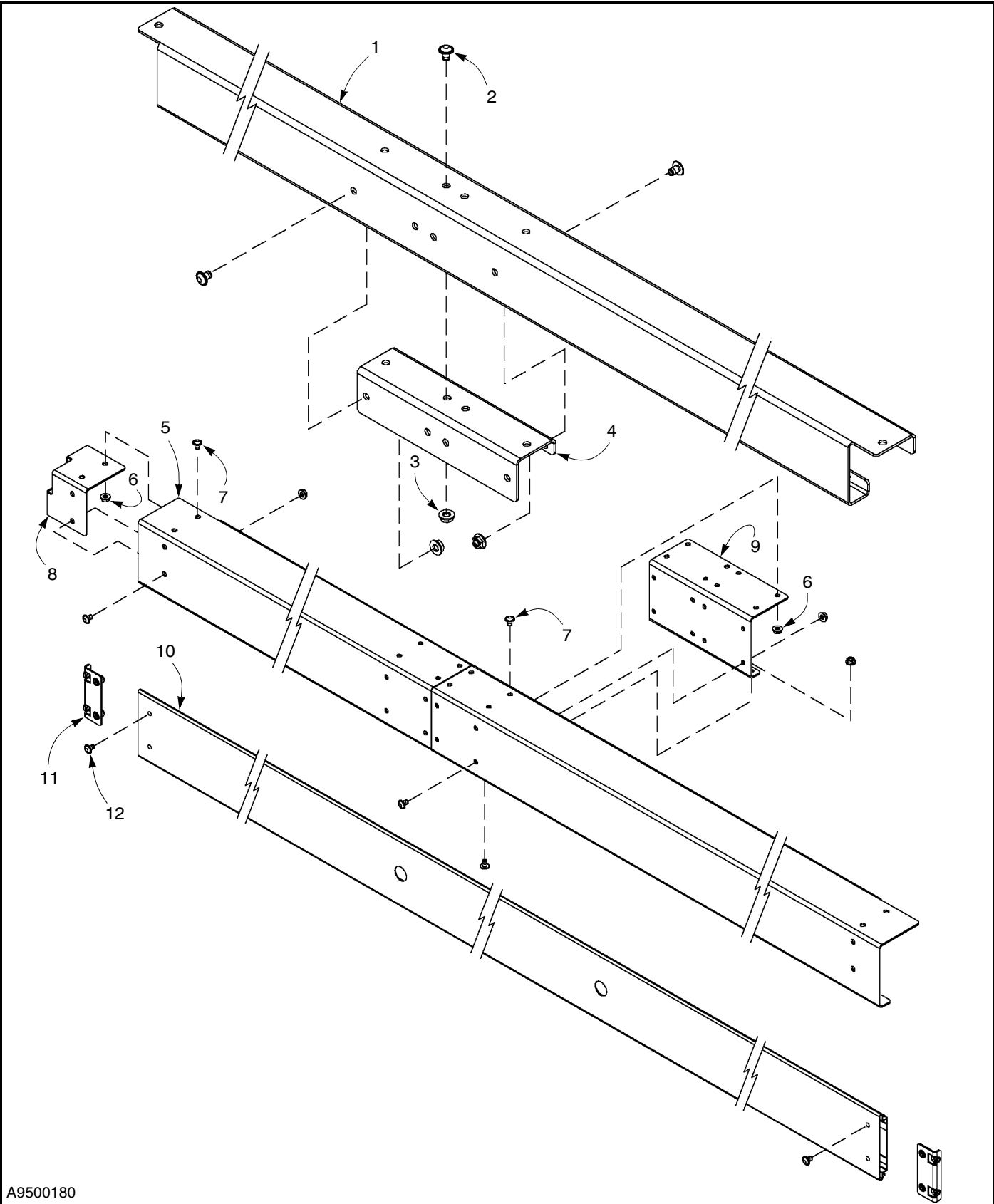
*\* Items are produced based on manufactured height and width of door.*

*\*\* Items only used on doors 16 feet and taller.*

### ALWAYS INCLUDE SERIAL NUMBER OF DOOR WHEN PLACING ORDER

To ensure you receive the correct parts when placing an order, always include the serial number of your door. Also, due to product enhancement, the actual parts on your door may be different from those shown in this manual.

SPREADER BARS



A9500180

Figure 80

ITEM	QTY.	PART #	DESCRIPTION
-	1	238907-02*	Rear Top Spreader Assembly
1	A/R	238357-02*	Rear Top Spreader
2	A/R	01900812	Screw, M8x12 T30 Torx Drive Dome Washer Head
3	A/R	01901508	Nut, M8 Flange Hex
4	A/R	238319-01	Splice Bracket, Rear Top Spreader

ITEM	QTY.	PART #	DESCRIPTION
-	1	238908*	Front Top Spreader Assembly
5	1	238355*	Front Top Spreader
6	A/R	01901508	Nut, M8 Flange Hex
7	A/R	01900812	Screw, M8x12 T30 Torx Drive Dome Washer Head
8	2	231320	End Bracket, Front Top Spreader
9	A/R	238359	Splice Bracket, Front Top Spreader

ITEM	QTY.	PART #	DESCRIPTION
-	1	237867*	Rear Spreader Assembly
10	1	237313*	Rear Spreader, 20mm
11	2	237868	End Bracket Assembly, Rear Spreader
12	4	01900812	Screw, M8x12 T30 Torx Drive Dome Washer Head

*A/R = as required*

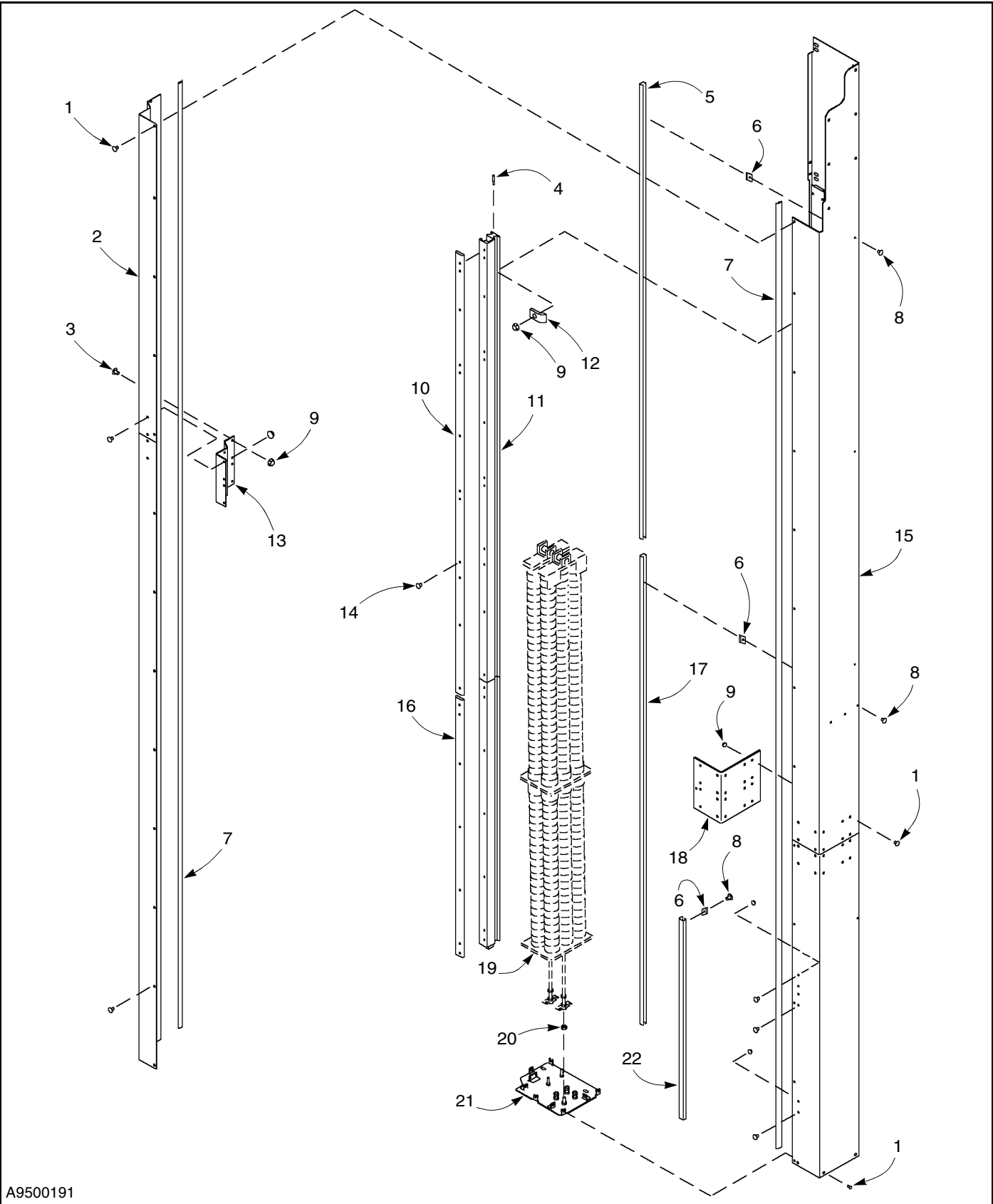
*\* Items are produced based on manufactured height and width of door.*

*\*\* Items only used on doors 16 feet and taller.*

**ALWAYS INCLUDE SERIAL NUMBER OF DOOR WHEN PLACING ORDER**

To ensure you receive the correct parts when placing an order, always include the serial number of your door. Also, due to product enhancement, the actual parts on your door may be different from those shown in this manual.

SIDE COLUMNS



A9500191

Figure 81

## PARTS LIST—SIDE COLUMNS

ITEM	QTY.	PART #	DESCRIPTION	ITEM	QTY.	PART #	DESCRIPTION
-	1	238800_2	Assembly, Right Side Column	14	A/R	01900820	Screw, M8x20 T40 Torx Drive Dome Washer Head
-	1	238800_1	Assembly, Left Side Column (not shown)	15	1	238801_2*	Sub-assembly, Side Column, Right
1	A/R	01900812	Screw, M8x12 T30 Torx Drive Dome Washer Head		1	238801_1	Sub-assembly, Side Column, Left (not shown)
2	1	238308_2*	Front Cover, Right, Side Column	16	1	237304*	Vertical Track Cap, Lower x 1680 Long
	1	238308_1*	Front Cover, Left, Side Column (not shown)	17	1	08041001B*	Wire Raceway, Lower Rear Right Side Column
3	A/R	01900816	Screw, M8x16 T40 Torx Drive Dome Washer Head	18	1	218335	Splice Plate, Side Column
4	4	217507	Track Pins	19	A/R	-*	Spring Pack (Refer to pages 60 thru 65)
5	1	08041001C*	Wire Raceway, Reversing Edge Cable	20	12	01270060	Nut, DIN 934-8 M10 Hex
6	5	01901010	Nut, Lock, M6 Hex	21	1	238802_2	Assembly, Right Base Plate
7	2	04010337*	Weather Seal, Side Column		1	238802_1	Assembly, Left Base Plate (not shown)
8	5	01900708	Screw, M6x8 T30 Torx Drive Dome Washer Head	22	1	08041001E	Wire Raceway, Right Side Column, Photo Eye Bracket x 43mm Long
9	A/R	01901508	Nut, M8 Flange Hex		1	08041001D	Wire Raceway, Left Side Column, Photo Eye Bracket x 43mm Long (not shown)
10	1	237303_2*	Vertical Track Cap, Upper, Right	23	1	0-904-011	Handle, Brake Release (Left side column only, not shown – Refer to page 48)
	1	237303_1*	Vertical Track Cap, Upper, Left (not shown)	24	1	081200607	Energy Chain (Right side column only, not shown – refer to page 58)
11	1	237302_2*	Vertical Track, Right, Machining				
	1	237302_1*	Vertical Track, Left, Machining (not shown)				
12	A/R	217102	Rail Clip				
13	1	238323	Splice Plate, Front Cover				

*A/R = as required*

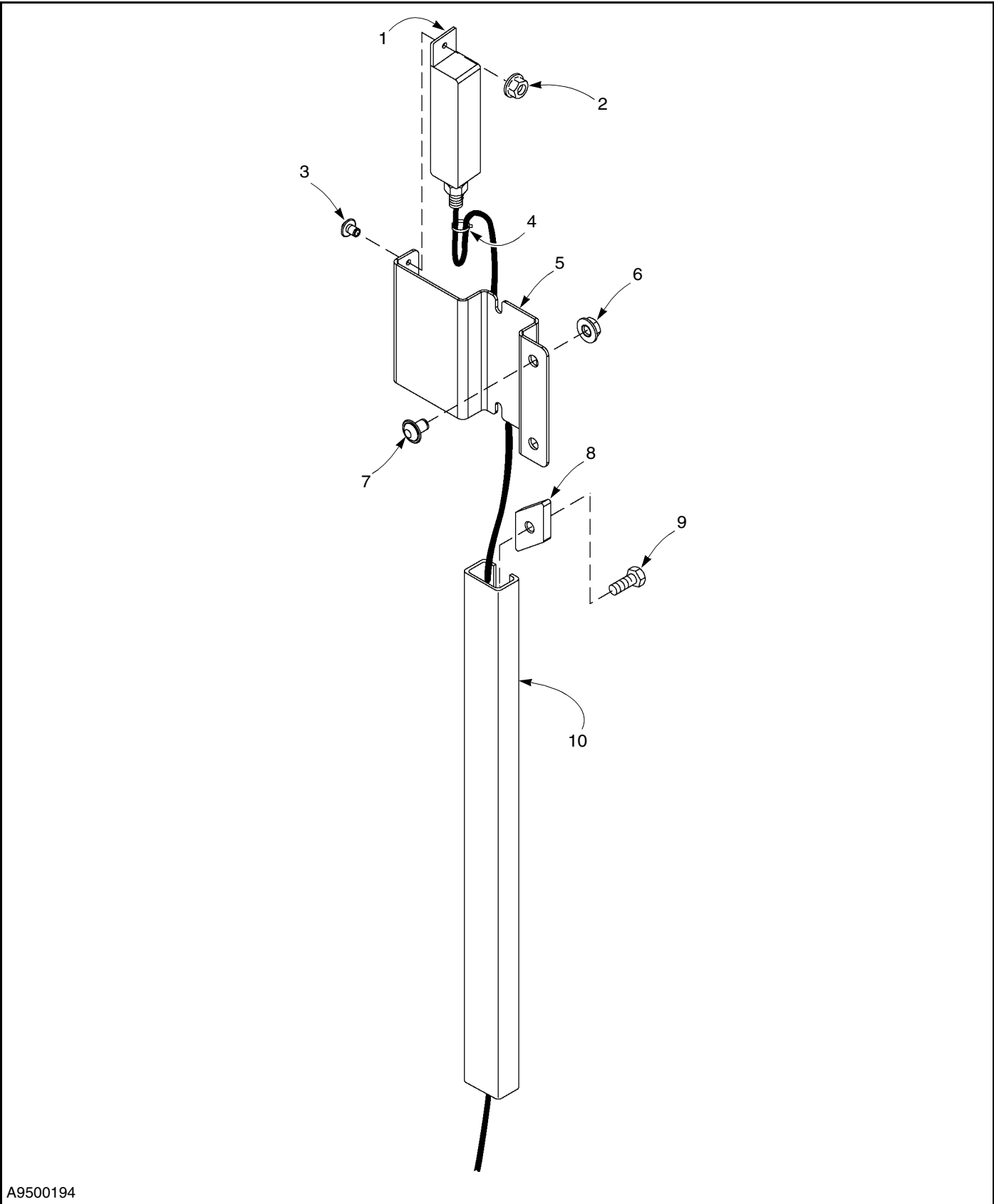
*\* Items are produced based on manufactured height and width of door.*

*\*\* Items only used on doors 16 feet and taller.*

### ALWAYS INCLUDE SERIAL NUMBER OF DOOR WHEN PLACING ORDER

To ensure you receive the correct parts when placing an order, always include the serial number of your door. Also, due to product enhancement, the actual parts on your door may be different from those shown in this manual.

FACTORY-INSTALLED PHOTO EYES



A9500194

Figure 82

## PARTS LIST—FACTORY-INSTALLED PHOTO EYES

ITEM	QTY.	PART #	DESCRIPTION
1	1	02223208	Photo Eyes, Receiver and Emitter, (Factory-Installed Photo Eyes, One Set, Cables Included)
2	2	01335004	Nut, Lock, DIN 985-8 M4
3	2	01010156	Screw, DIN 84-4.8, M4x20
4	A/R	0005400	Ties, Cable 15" Black 3M 06277
5	2	237334-01	Bracket, Photo Eye
6	8	01901508	Nut, M8 Flange Hex
7	8	01900812	Screw, M8x12 T30 Torx Drive Dome Washer Head
8	1	01901010	Nut, Lock, M6 Hex
9	1	01900708	Screw, M6x8 T30 Torx Drive Dome Washer Head
10	2	08041001D	Wire Raceway, 43 cm Long

*A/R = as required*

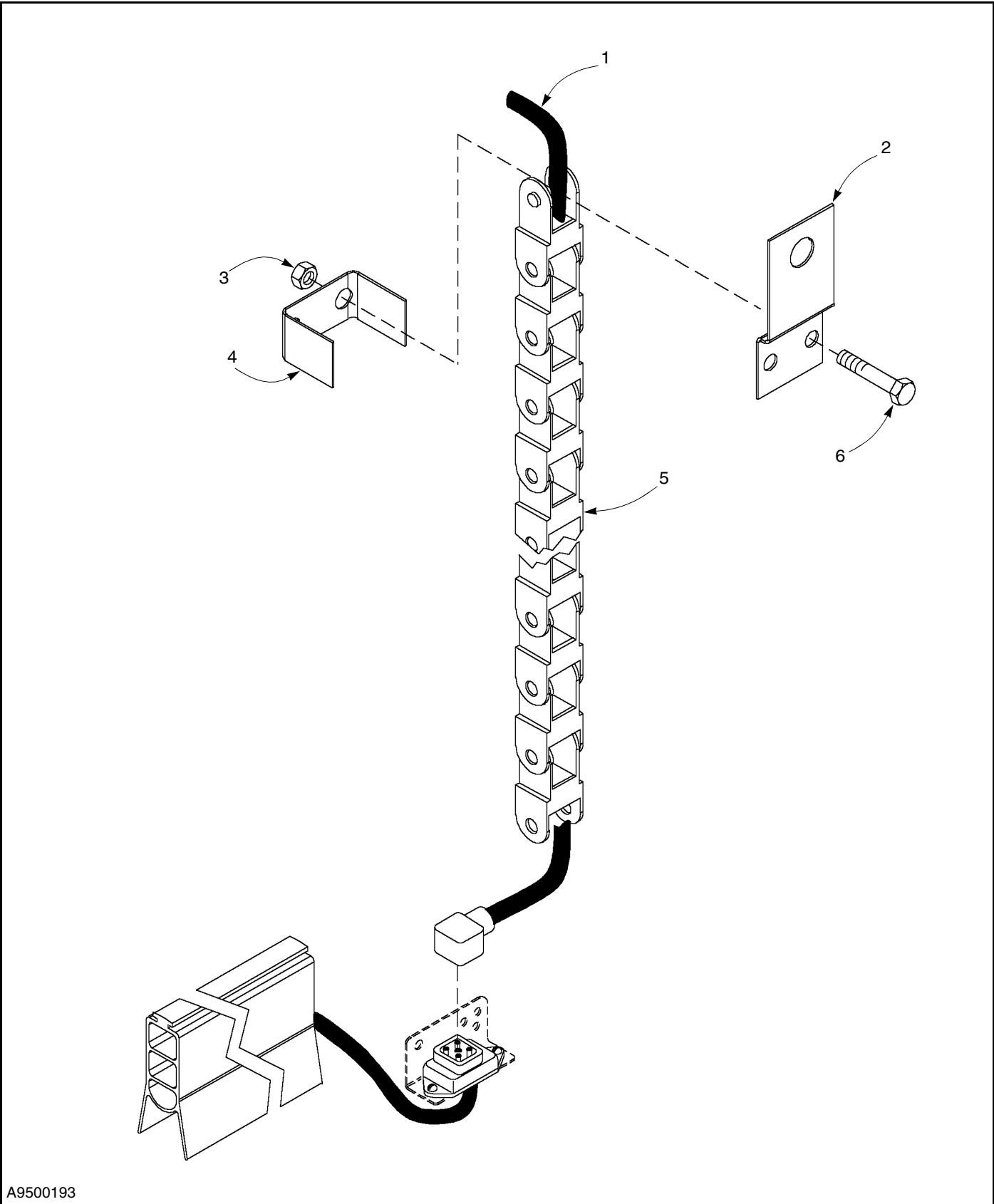
*\* Items are produced based on manufactured height and width of door.*

*\*\* Items only used on doors 16 feet and taller.*

### **ALWAYS INCLUDE SERIAL NUMBER OF DOOR WHEN PLACING ORDER**

To ensure you receive the correct parts when placing an order, always include the serial number of your door. Also, due to product enhancement, the actual parts on your door may be different from those shown in this manual.

ENERGY CHAIN



A9500193

Figure 83

ITEM	QTY.	PART #	DESCRIPTION
1	1	WN817/bs	Cable, Energy Chain Connecting
2	1	08120609	Anchor Clip, Energy Chain
3	2	01335004	Nut, Lock, DIN 985-8 M4 Nylon Insert
4	1	237322	Bracket, Energy Chain Clamp
5	1	08120607	Energy Chain
6	2	01010156	Screw, DIN 84-4.8 M4x20 Slotted Cheese Head

*A/R = as required*

*\* Items are produced based on manufactured height and width of door.*

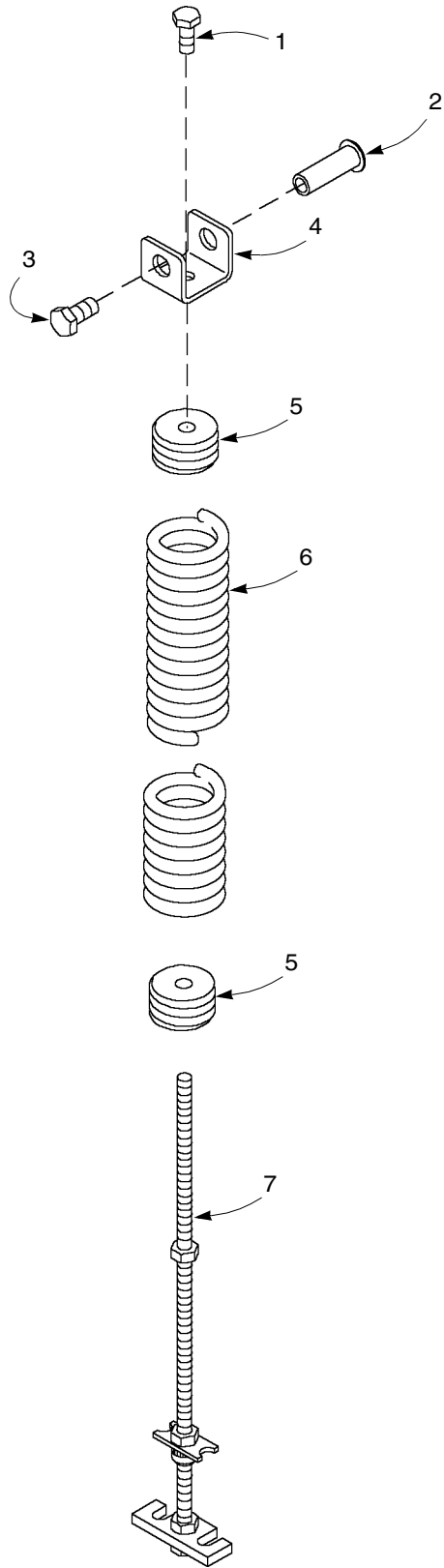
*\*\* Items only used on doors 16 feet and taller.*

## ALWAYS INCLUDE SERIAL NUMBER OF DOOR WHEN PLACING ORDER

To ensure you receive the correct parts when placing an order, always include the serial number of your door. Also, due to product enhancement, the actual parts on your door may be different from those shown in this manual.

PARTS LIST—SINGLE SPRING PACK

SINGLE SPRING PACK



A9500189

Figure 84

ITEM	QTY.	PART #	DESCRIPTION
-	A/R	217871B_02	Outside Spring Pack Assembly (Single Spring)
1	1	01260320	Screw, DIN 933 8.8 M10x25, Hex Head
2	1	609270A	Shoulder Nut, Spring Clevis
3	1	01260400	Screw, DIN 933 M12x25 Hex Head
4	1	207070	Clevis, Spring Pack
5	2	205512	Spring Plug
6	1	WN350	Spring
7	1	217891A	Spring Pack Adjustment Rod Assembly

*A/R = as required*

*\* Items are produced based on manufactured height and  
width of door.*

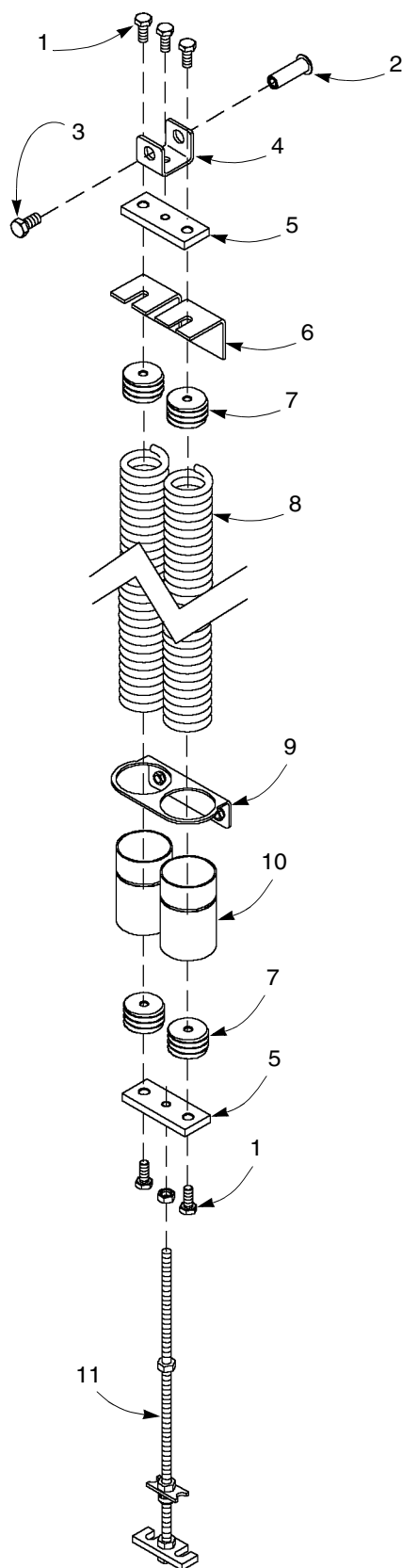
*\*\* Items only used on doors 16 feet and taller.*

**ALWAYS INCLUDE SERIAL NUMBER OF DOOR WHEN PLACING ORDER**

To ensure you receive the correct parts when placing an order, always include the serial number of your door. Also, due to product enhancement, the actual parts on your door may be different from those shown in this manual.

## PARTS LIST—DOUBLE SPRING PACK

### DOUBLE SPRING PACK



A9500187

Figure 85

ITEM	QTY.	PART #	DESCRIPTION
-	1	217871A	Outside Spring Pack Assembly (Dual Springs)
-	1	217871D	Inside Spring Pack Assembly (Dual Springs)
1	5	01260320	Screw, DIN 933 8.8 M10x25, Hex Head
2	1	609270A	Shoulder Nut, Spring Clevis
3	1	01260400	Screw, DIN 933 M12x25 Hex Head
4	1	207070	Clevis, Spring Pack
5	1	205084	Bar, Dual Spring Pack
6	2	217604	Guide, Spring Pack, Hard PVC (Outside Spring Pack Assembly Only)
7	4	205512	Spring Plug
8	2	WN350	Spring
9	1	217902	Outside Guide Bracket, Dual Springs
	1	218104	Inside Guide Bracket, Dual Springs
10	2	217605	Guide Tube, PVC Spring Pack
11	1	217892A	Spring Pack Adjustment Rod Assembly

*A/R = as required*

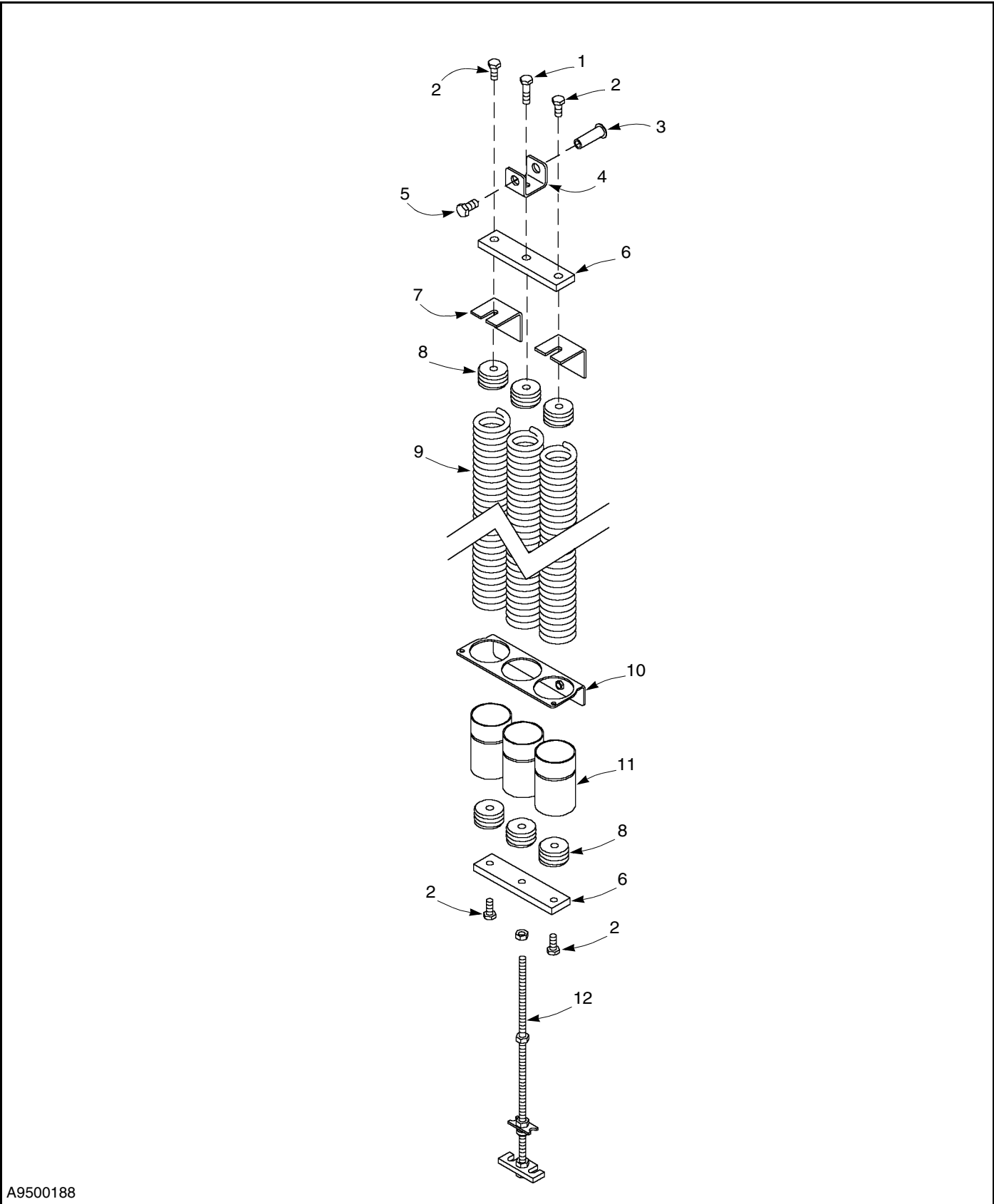
*\* Items are produced based on manufactured height and width of door.*

*\*\* Items only used on doors 16 feet and taller.*

## ALWAYS INCLUDE SERIAL NUMBER OF DOOR WHEN PLACING ORDER

To ensure you receive the correct parts when placing an order, always include the serial number of your door. Also, due to product enhancement, the actual parts on your door may be different from those shown in this manual.

TRIPLE SPRING PACK



A9500188

Figure 86

ITEM	QTY.	PART #	DESCRIPTION
-	1	217871C	Outside Spring Pack Assembly (Triple Springs)
-	1	217871E	Inside Spring Pack Assembly (Triple Springs)
1	1	01260340	Screw, DIN 933 M10x40 Hex Head
2	4	01260320	Screw, DIN 933 8.8 M10x25, Hex Head
3	1	609270A	Shoulder Nut, Spring Clevis
4	1	207070	Clevis, Spring Pack
5	1	01260410	Screw, DIN 933 M12x25 Hex Head
6	1	206070	Bar, Triple Spring Pack
7	2	217604	Guide, Spring Pack, Hard PVC (Outside Spring Pack Assembly Only)
8	6	205512	Spring Plug
9	3	WN350	Spring
10	1	217901	Outside Guide Bracket, Triple Springs
	1	218103	Inside Guide Bracket, Triple Springs
11	3	217605	Guide Tube, PVC Spring Pack
12	1	217891A	Adjustment Rod Assembly, Spring Pack

*A/R = as required*

*\* Items are produced based on manufactured height and width of door.*

*\*\* Items only used on doors 16 feet and taller.*

**ALWAYS INCLUDE SERIAL NUMBER OF DOOR WHEN PLACING ORDER**

To ensure you receive the correct parts when placing an order, always include the serial number of your door. Also, due to product enhancement, the actual parts on your door may be different from those shown in this manual.

DOOR PANEL

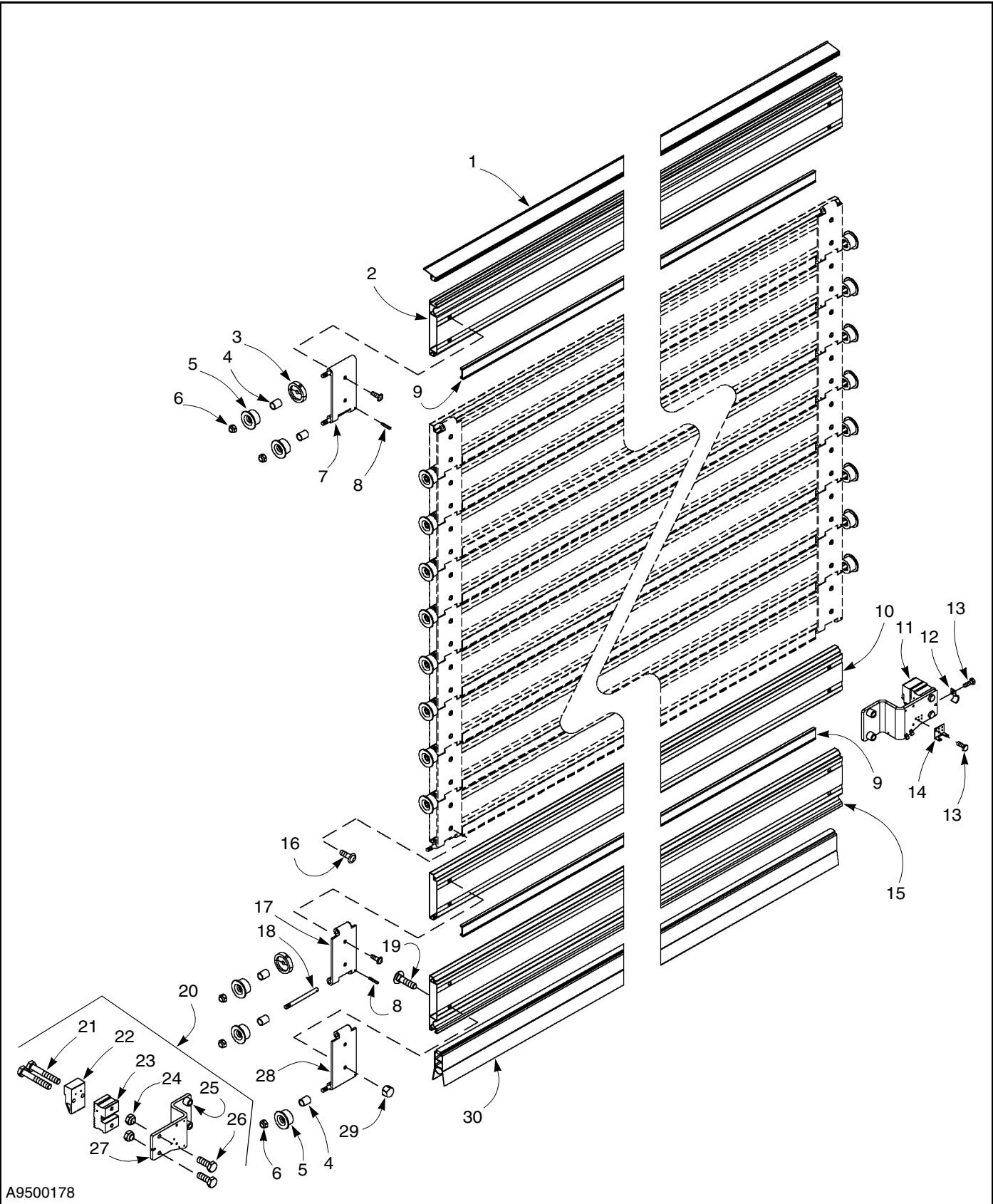


Figure 87

## PARTS LIST—DOOR PANEL

ITEM	QTY.	PART #	DESCRIPTION	ITEM	QTY.	PART #	DESCRIPTION
-	1	238830*	Final Panel Assembly	17	A/R	218867-1	Hinge Assembly, Middle-Left
1	1	04010170*	Top Seal		A/R	218867-2	Hinge Assembly, Middle-Right (Not Shown)
2	1	238832*	Top Panel Assembly w/o TB	18	A/R	218504	Axle, Hinge 133mm
3	4	217600	Guide, Side Door Panel	19	4	01160600	Screw, Mushroom Head Square Neck DIN 603 M10x40
4	A/R	217505	Spacer, Axel	20	1	238831_1	Assembly, End Bracket, Left (Consists of items 21 thru 27)
5	A/R	205625	Roller Assembly	21	4	01260363	Screw, DIN 933-8.8 M10x65 Hex Head
6	A/R	01335008	Nut, Lock, DIN 985-8 M8 Nylon Insert Hex	22	2	238102	Splice Clamp, End Bracket
7	1	218866_1	Hinge Assembly, Top, Lh, 100mm Wide	23	2	238101	Splice Block, End Bracket
	1	218866_2	Hinge Assembly, Top, Rh, 100mm Wide (Not Shown)	24	4	01335010	Nut, Lock, DIN 985-8 M10 Nylon Insert Hex
8	A/R	01370314	Spring Pin, 3mm Dia. x 14mm	25	4	237501B	Spacer, End Bracket
9	A/R	04010085*	Panel Seal	26	4	01260330	Screw, DIN 933-8.8 M10x30 Hex Head
10	A/R	238833*	Standard Panel Assembly with Nuts, 30mm	27	1	238310_1	End Plate, End Bracket, Left
	A/R	238834	Insulated Panel Assembly with Nuts, 30mm		1	238310-2	End Plate, End Bracket, Right (Not Shown)
	A/R	238835	Window Panel Assembly	28	1	218865_1	Bottom-Left Hinge Assembly, 100mm Wide
11	1	238831-2	Assembly, End Bracket, Right (Consists of items 21 thru 27)		1	218865_2	Bottom-Right Hinge (Not Shown)
12	3	02382756	Wire Clip				Assembly, 100mm Wide
13	7	01260006	Screw, Din 933-8,8 M4x8 Hex Head	29	4	01230010	Nut, Cap, DIN 917 M10
14	1	216330	Bracket, Reversing Plug Support	30	1	E238601*	Reversing Edge Assembly
15	1	238305*	Bottom Panel, w/o TB (Cut to Size)				
16	A/R	01900720	Screw, M6x20 T30 Torx Drive Dome Washer Head				

*A/R = as required*

*\* Items are produced based on manufactured height and width of door.*

*\*\* Items only used on doors 16 feet and taller.*

### ALWAYS INCLUDE SERIAL NUMBER OF DOOR WHEN PLACING ORDER

To ensure you receive the correct parts when placing an order, always include the serial number of your door. Also, due to product enhancement, the actual parts on your door may be different from those shown in this manual.

