

DRAWING NOT TO SCALE, ALL DIMENSIONS IN INCHES

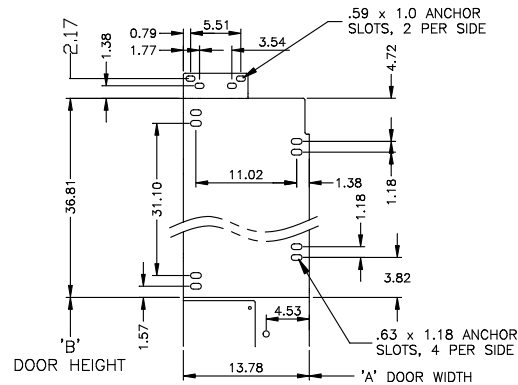
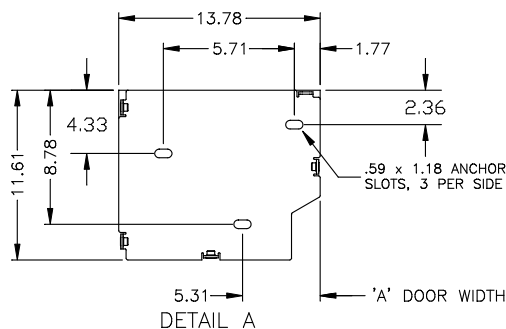
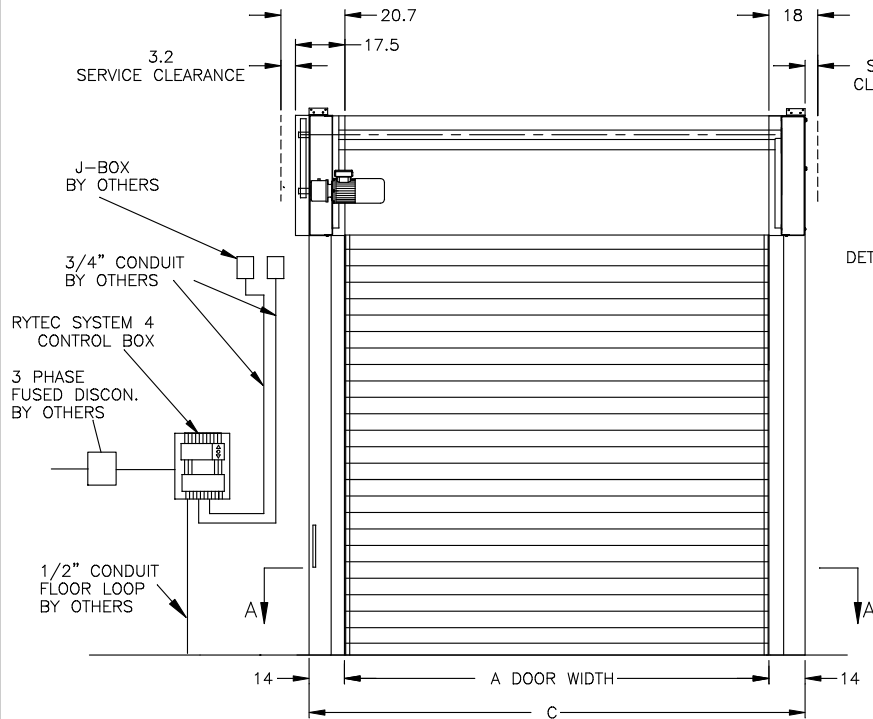
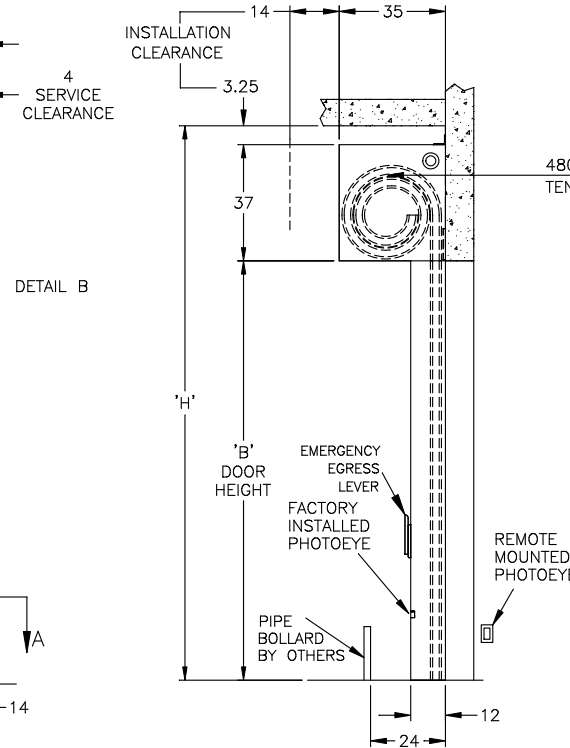
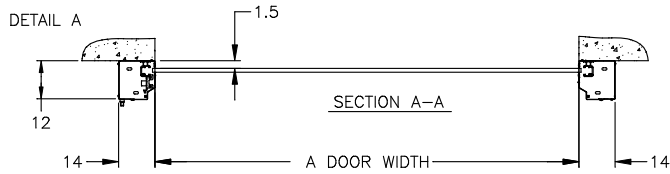
DOOR NO.	A	B	C	VOLTAGE	PHASE	H.P.	H
DOOR #	A	B	C	460	3	3	H

NOTE!

DOOR SIZE IS CONVERTED TO MILLIMETERS FOR MANUFACTURING SIZE MAY BE ROUNDED UP TO NEAREST 10mm.  
ACTUAL MANUFACTURED SIZE IS: \_XXXX\_ WIDTH X \_XXXX\_ HEIGHT  
REFER TO SST-HZ PRODUCT SUBMITTAL DWG #9B963-R4 FOR APPROVED ANCHORING METHODS

#### NOTES:

- ONE PHOTO EYES IN SIDE COLUMN - FACTORY INSTALLED
- ONE PHOTOEYE FOR FIELD INSTALLATION.
- VARIABLE DOOR OPENING SPEED UP TO 60" PER SECOND
- DOOR CLOSING SPEED OF 30" PER SECOND
- PROGRAMABLE UPPER AND LOWER LIMITS
- SYSTEM 4 CONTROL BOX (8 1/2" x 16 1/2")
- BRAKE RELEASE LEVER ON SIDE COLUMN
- ELECTRIC FAIL SAFE REVERSING EDGE
- HEAVY DUTY ROLLERS AND GUIDE TRACK
- HURRICANE RATED DESIGN PRESSURE +/-50 PSF
- DOOR APPROVED BY FBC FOR USE IN AND OUTSIDE HVHZ
- DOOR APPROVED BY FBC FOR LARGE MISSILE IMPACT
- REGISTERED BY FBC UNDER APPROVAL # FL6833
- APPROVED BY MIAMI-DADE BCCO NOA# 06-1017.07



#### ACTIVATORS

#### QTY.

#### ACTIVATORS

#### QTY.

- ☐ PHOTOEYE  
☐ PULLCORDS  
☐ RADIO CONTROL  
W/2 TRANSMITTERS  
☐ ADDITIONAL  
TRANSMITTERS

- ☐ MOTION DETECTOR  
☐ PUSHBUTTON  
☐ FLOOR LOOP CONTROLLER  
☐ OTHERS (DESCRIBE IN NOTES)

#### DETAIL B

#### OPTIONS

- ☐ TOP DUST COVER  
☐ SLANT HOOD  
☐ FRONT AND BOTTOM HEAD COVERS

## RYTEC CORPORATION

ONE CEDAR PARKWAY, JACKSON, WI 53037-0403

### APPROVAL DRAWING

### SPIRAL MODEL SST-HZ SYSTEM 4

FOR DOORS WIDTH TO 16' , HEIGHT 8' TO 21'-0"

CUSTOMER:

LOCATION:

DATE:  
12/1/11

DEALER:

APPV'D BY:

DRAWING NO.:

401074-10T

REV.:

—