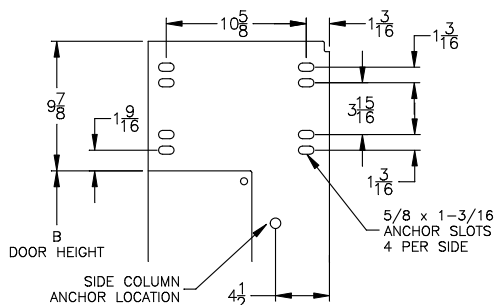
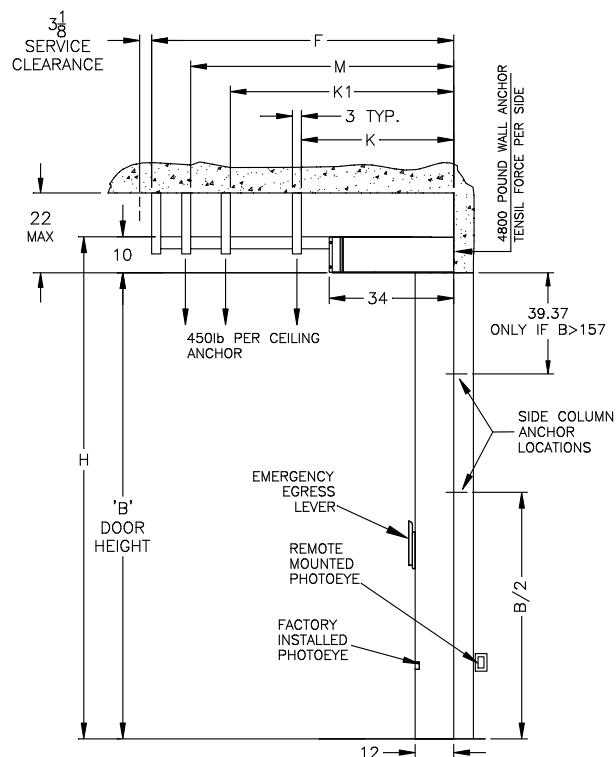


DETAIL B



DETAIL C



#### HANGER FORMULAS

K = NOT REQUIRED; FOR B<98  
K = 72; FOR B>98

K1 = NOT REQUIRED; FOR B<161  
K1 = 135; FOR B>161

M = B+20; FOR B<91  
M = B; FOR B>91

F = B+31; FOR B<91  
F = B+11; FOR B>91

#### APPROVAL SIGNATURE

FABRICATION CAN PROCEED ACCORDING TO THE  
SPECIFICATION SHOWN EXCEPT AS NOTED

APPROVED BY: \_\_\_\_\_

PRINT NAME: \_\_\_\_\_

SIGNATURE: \_\_\_\_\_

DATE: \_\_\_\_\_

#### DIMENSIONAL VARIABLES

DRAWING NOT TO SCALE; DIMENSIONS IN INCHES

DOOR NO.	A	B	C	F	M	K1	K	H
MILLIMETERS								

**ACTUAL DOOR SIZE IS PRODUCED IN MILLIMETERS**  
REQUESTED DOOR SIZE IS CONVERTED TO MILLIMETERS  
AND ROUNDED UP TO THE NEAREST 10MM

#### ELECTRICAL OPTIONS

- ☐ 460v - 3ph
- ☐ 230v/208v - 3ph
- ☐ 230v/208v - 1ph
- ☐ 575v - 3ph
- ☐ OTHER

#### STANDARD FEATURES

1. ONE THRU-BEAM PHOTOEYE SET MOUNTED IN SIDE COLUMN AT 16" FROM FLOOR-FACTORY INSTALLED.
2. ONE THRU-BEAM PHOTOEYE SET-FIELD INSTALLED.
3. VARIABLE DOOR OPENING SPEED; UP TO 60"/SEC
4. DOOR CLOSING SPEED OF 30"/SECOND
5. PROGRAMMABLE UPPER AND LOWER LIMITS
6. SYSTEM 4 CONTROL BOX (8 1/2"x16 1/2")
7. BRAKE RELEASE LEVER ON SIDE COLUMN
8. ELECTRICAL FAIL SAFE REVERSING EDGE.
9. HEAVY DUTY ROLLERS AND GUIDE TRACK
10. INSULATED PANEL SLATS
11. HURRICANE RATED DESIGN PRESSURE +/-50PSF
12. DOOR APPROVED FOR USE IN AND OUTSIDE HVHZ
13. DOOR APPROVED FOR LARGE MISSILE IMPACT
14. APPROVED BY MIAMI-DADE BCCO NOA#08-1024.03
15. REFER TO PRODUCT SUBMITTAL DWG 9B963-R4 FOR APPROVED ANCHORING METHODS

#### STANDARD OPTIONS

- ☐ TOP DUST COVER
- ☐ SLANT HOOD
- ☐ FRONT AND BOTTOM HEAD COVERS
- ☐ RIGHT HAND DRIVE
- ☐ REMOTE MOUNTED EGRESS LEVER

#### ACTIVATION

- ☐ — PRESENSE SENSOR
- ☐ — PULLCORDS
- ☐ — RADIO CONTROL w/2 X-MITTERS
- ☐ — MOTION DETECTOR
- ☐ — PUSHBUTTON
- ☐ — FLOOR LOOP CONTROLLER
- ☐ OTHERS (DESCRIBE IN NOTES)

#### OPTION NOTES

ADDITIONAL NOTES:

#### RYTEC CORPORATION

ONE CEDAR PARKWAY, JACKSON, WI 53037-0403

#### APPROVAL DRAWING

**SPIRAL MODEL SSN-HZ SYSTEM 4**  
**FOR DOOR WIDTH UP TO 16'-0", HEIGHT UP TO 16'-4"**

CUSTOMER: \_\_\_\_\_

LOCATION: \_\_\_\_\_

DATE: \_\_\_\_\_

DRAWING NO.: 401074-13T

REV.: —

REV	DESCRIPTION	DATE	BY