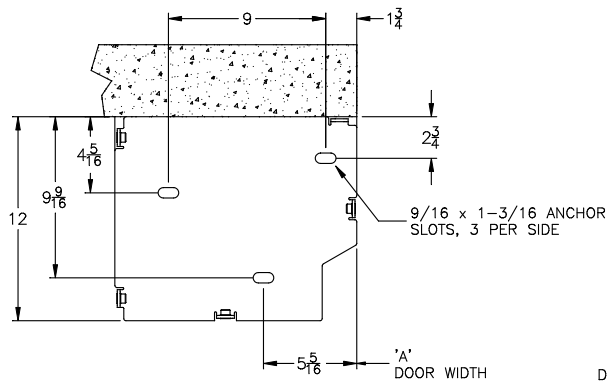
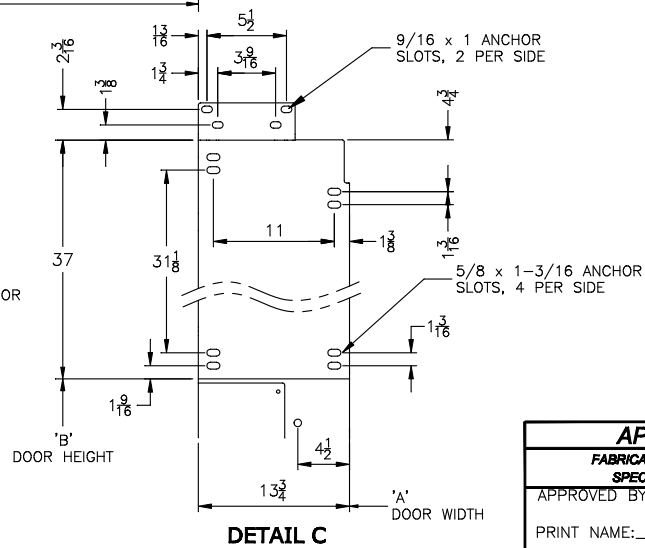
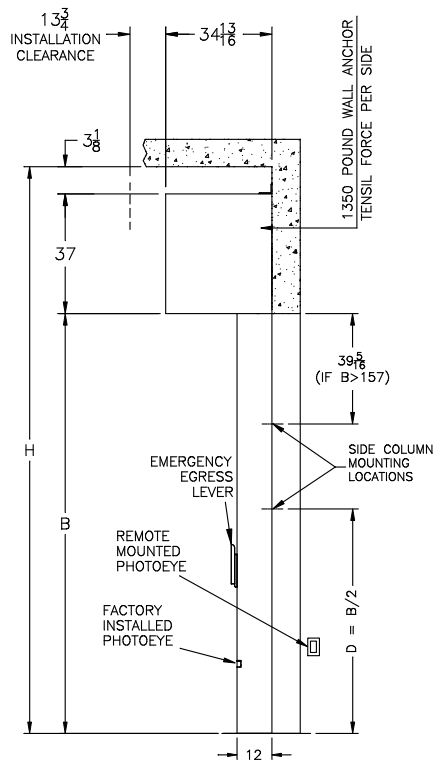
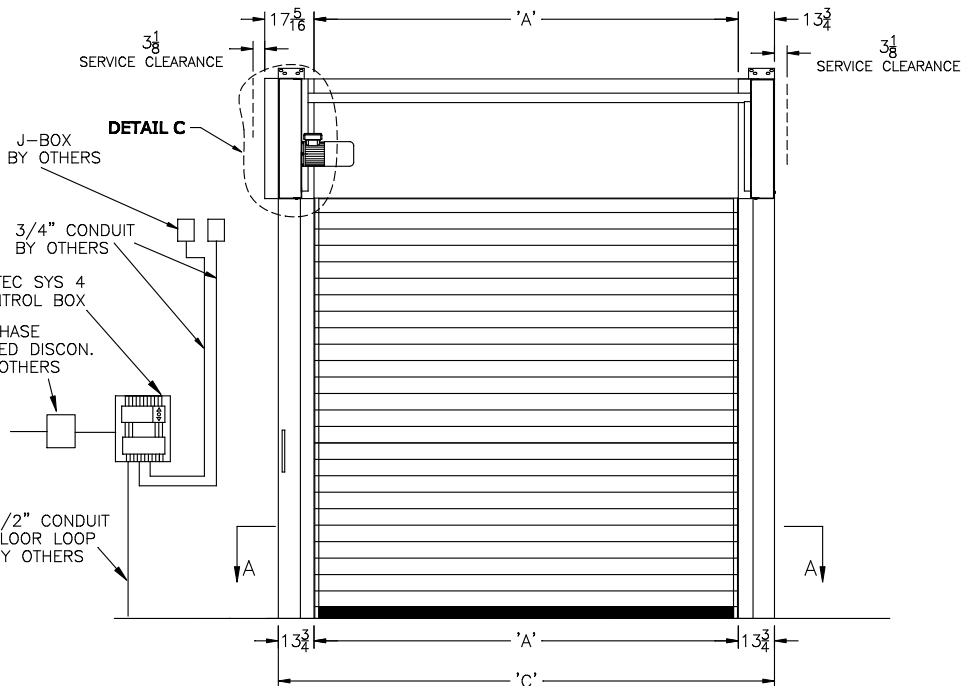


SECTION A-A

'A' DOOR WIDTH



DETAIL B

DETAIL C

DIMENSIONAL VARIABLES

DRAWING NOT TO SCALE; DIMENSIONS IN INCHES

DOOR NO.	A	B	C	H
MILLIMETERS				

ACTUAL DOOR SIZE IS PRODUCED IN MILLIMETERS
REQUESTED DOOR SIZE IS CONVERTED TO MILLIMETERS
AND ROUNDED UP TO THE NEAREST 10MM

ELECTRICAL OPTIONS

- ☐ 460v - 3ph
- ☐ 230v/208v - 3ph
- ☐ 230v/208v - 1ph
- ☐ 575v - 3ph
- ☐ OTHER

STANDARD FEATURES

1. ONE THRU-BEAM PHOTOEYE SET MOUNTED IN SIDE COLUMN AT 16" FROM FLOOR-FACTORY INSTALLED.
2. ONE THRU-BEAM PHOTOEYE SET-FIELD INSTALLED.
3. VARIABLE DOOR OPENING SPEED; UP TO 118"/SEC
4. DOOR CLOSING SPEED OF 30"/SECOND
5. PROGRAMMABLE UPPER AND LOWER LIMITS
6. SYSTEM 4 CONTROL BOX (8 1/2"x16 1/2")
7. BRAKE RELEASE LEVER ON SIDE COLUMN
8. ELECTRICAL FAIL SAFE REVERSING EDGE.

STANDARD OPTIONS

- ☐ TOP DUST COVER
- ☐ SLANT HOOD
- ☐ FRONT AND BOTTOM HEAD COVERS
- ☐ RIGHT HAND DRIVE
- ☐ REMOTE MOUNTED EGRESS LEVER

ACTIVATION

- ☐ PRESENSE SENSOR
- ☐ PULLCORDS
- ☐ RADIO CONTROL w/2 X-MITTERS
- ☐ MOTION DETECTOR
- ☐ PUSHBUTTON
- ☐ FLOOR LOOP CONTROLLER
- ☐ OTHERS (DESCRIBE IN NOTES)

OPTION NOTES

ADDITIONAL NOTES:

RYTEC CORPORATION

ONE CEDAR PARKWAY, JACKSON, WI 53037-0403

APPROVAL DRAWING

SPIRAL FV MODEL STT-S SYSTEM 4
FOR DOOR WIDTH UP TO 19'-8", HEIGHT UP TO 19'-8"

CUSTOMER:

LOCATION:

DATE:

REV.: —

DRAWING NO.: 401074-18T

APPROVAL SIGNATURE

FABRICATION CAN PROCEED ACCORDING TO THE
SPECIFICATION SHOWN EXCEPT AS NOTED

APPROVED BY:

PRINT NAME: _____

SIGNATURE: _____

DATE: _____

REV	DESCRIPTION	DATE	BY