

*Requirements: Responsible Party**

- 1. BRANCH CIRCUIT PROTECTION AND MAIN POWER DISTRIBUTION WIRES: 1 _____
- 2. SUPPLY & MOUNTING OF FUSED DISCONNECT (INCLUDING FUSES) WITHIN 5 FT OF THE DOOR OPENING: 2 _____
- 3. MOUNTING OF CONTROL PANEL WITHIN 5 FT OF DOOR OPENING: 3 _____
- 4. WIRING FROM DISCONNECT TO CONTROL PANEL: 4 _____
- 5. CONDUIT, WIRE AND OTHER MATERIAL REQUIRED FOR CONNECTIONS FROM CONTROL PANEL TO DOOR: 5 _____
- 6. MOUNTING OF REMOTE PHOTO EYES AND ACTIVATORS, (NOT SHOWN): 6 _____
- 7. WIRING OF ACTIVATORS (SEE ACTIVATOR MANUALS): 7 _____
- 8. INSTALLATION OF OPTIONAL FLOOR LOOP WIRING (INCLUDES FLOOR CUTTING IF REQ'D): 8 _____
- 9. TERMINATION OF ALL WIRING: 9 _____

**Resp. Party to provide all materials and labor to complete the work indicated.*

Activator Options, Qty, Responsible Party

PHOTO EYE:	_____	_____
PULLCORD:	_____	_____
MOTION DETECTOR:	_____	_____
PUSH-BUTTON:	_____	_____
FLOOR LOOP:	_____	_____
OTHERS (SEE NOTES):	_____	_____

Additional Notes:

RYTEC CORPORATION

ONE CEDAR PARKWAY, JACKSON, WI 53037-0403

CLEANROLL® with SYSTEM 4
Drive and Control.

Electrical Scope Of Work

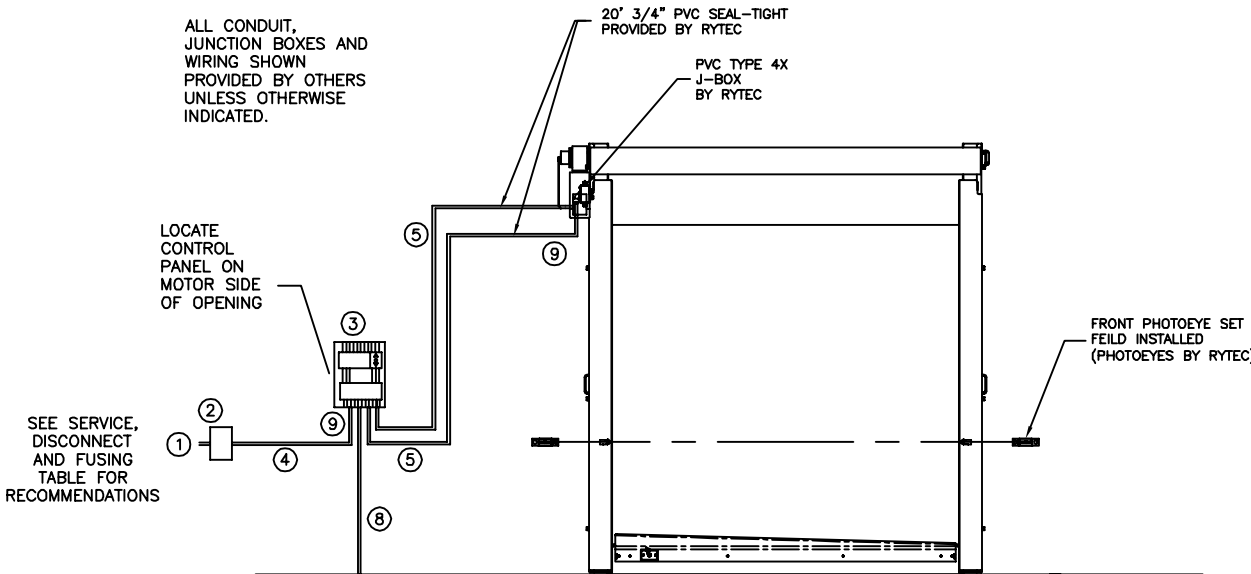
CUSTOMER: _____

LOCATION: _____

DATE: 11/21/11 DEALER: _____ APP'VD BY: _____

DRAWING NO.: 411084-00T REV.: A

ALL CONDUIT, JUNCTION BOXES AND WIRING SHOWN PROVIDED BY OTHERS UNLESS OTHERWISE INDICATED.



SEE SERVICE, DISCONNECT AND FUSING TABLE FOR RECOMMENDATIONS

GENERAL ELECTRICAL INSTALLATION NOTES

- A). THE ENCLOSURE MOUNTING HARDWARE PROVIDED MUST BE USED IN ORDER TO MAINTAIN THE ENCLOSURE RATING (TYPE 4 STANDARD UNLESS OTHERWISE NOTED ON APPROVAL DRAWING.).
- B). ALL CONDUIT CONNECTIONS TO THE CONTROL PANEL SHOULD ENTER THROUGH THE BOTTOM OF THE ENCLOSURE. ANY CONDUIT ENTRIES IN THE SIDES OR TOP OF THE ENCLOSURE WILL VOID THE WARRANTY.
- C). ALL FIELD ELECTRICAL WORK MUST CONFORM TO ANY APPLICABLE LOCAL OR NATIONAL ELECTRIC CODES.
- D). ALL FIELD WIRING TO BE MINIMUM 60" C, 600V RATED COPPER STRANDED TYPE.
- E). USE SHIELDED CABLE WHERE INDICATED ON THE SCHEMATIC PROVIDED WITH THE DOOR. FAILURE TO USE SHIELDED CABLE MAY RESULT IN IMPROPER OPERATION OR PREMATURE FAILURE AND WILL VOID WARRANTY.
- F). INSTALL ALL LOW VOLTAGE (< 50V) WIRING IN METALLIC CONDUIT SEPARATE FROM MOTOR AND OTHER HIGH VOLTAGE WIRING. FAILURE TO SEPARATE HIGH AND LOW VOLTAGE WILL VOID WARRANTY. (NOTE : BRAKE VOLTAGE IS 24VDC (LOW VOLTAGE)).
- G). TAKE NECESSARY PRECAUTIONS TO PREVENT MOISTURE FROM ENTERING CONTROL PANEL THROUGH CONDUIT.
- H). CLEANROLL PROVIDED WITH 20 FT SHIELDED MOTOR CABLE AND 50 FT SHIELDED ENCODER CABLE.
- I) IF SPlicing OF ENCODER CABLE IS NECESSARY, MAINTAIN SHIELDING AT SPLICE.
- J) CLEANROLL PROVIDED WITH SEAL-TIGHT AS SHOWN (STANDARD). IF RYTEC PROVIDED ELECTRICAL MATERIALS DO NOT MEET END USER SPECIFICATIONS, SPECIFIED MATERIALS ARE TO BE PROVIDED BY THE RESPONSIBLE PARTY AS LISTED.
- K) THIS DOCUMENT OUTLINES THE GENERAL ELECTRICAL REQUIREMENTS TYPICAL FOR THIS DOOR TYPE. REFER TO THE ELECTRICAL SCHEMATIC PROVIDED WITH THE DOOR FOR COMPLETE REQUIREMENTS.

SERVICE, DISCONNECT AND FUSING RECOMMENDATIONS

208-230V/1PH-50/60HZ
MINIMUM SERVICE: 20 AMP, (REQUIRED) DISCONNECT: 30 AMP, 300V MIN., 2 POLE FUSES: 20 AMP, CLASS R OR EQUAL
208-230V/3PH-50/60HZ
MINIMUM SERVICE: 20 AMP DISCONNECT: 30 AMP, 300V MIN., 3 POLE FUSES: 20 AMP, CLASS R OR EQUAL
460V/3PH-50/60HZ
MINIMUM SERVICE: 20 AMP DISCONNECT: 30 AMP, 600V MIN., 3 POLE. FUSES: 20 AMP, CLASS R OR EQUAL
600V/3PH-50/60HZ
MINIMUM SERVICE: 15 AMP DISCONNECT: 30 AMP, 600V MIN., 3 POLE. FUSES: 15 AMP, CLASS R OR EQUAL